



turn to the experts™ 



Making you  
and the  
environment  
smile!

## DUCTED SCROLL SERIES

EVER INNOVATING  
EVER EVOLVING  
FOREVER EXCELLING



Carrier | Hamilton Sundstrand | Otis | Pratt & Whitney | Sikorsky | UTC Fire & Security





**T**he Compressor is the heart of any air conditioning system. So, we decided to bring you the 5.5 TR and 8.5 TR Scroll Compressors, the best technology that guarantees high volumetric efficiency and low friction losses. They also have low sound and vibration, compared to reciprocating and rotary compressors.

These technological marvels are manufactured in a world-class facility by using the latest machining, assembly, process control techniques and are tested and subjected to abusive test conditions so that they can match the stringent quality standards you have set for yourself as a professional.

### **DUCTED UNITS WITH COPELAND SCROLL COMPRESSOR**

Ideal for residential and commercial applications, these Scroll Compressors are manufactured in a world-class production facility, using the latest state-of-the-art machining assembly and process control techniques.

As a result, while designing the compressors, careful consideration is given in maintaining high standards of reliability and process control, giving these compressors an edge in efficiency, low sound, and high reliability over competition.

**These units are available in 5.5 TR and 11 TR capacity.**

### **DUCTED UNITS WITH MANUEROP SCROLL COMPRESSOR**

The best in Scroll Compressor technology with built-in compressor protection offers higher efficiency, minimal noise, enhanced reliability/fault tolerance, easy installation and longer service life. Its patented design ensures that it uses approx. 20% less power than conventional air conditioning systems.

**These units are available in 8.5 TR and 17.0 TR capacity.**

## INDOOR UNIT

The Indoor Unit houses the Expansion Valve, which does not allow the liquid refrigerant to feed into the compressor, thus increasing the life of the unit. It also houses the Distributor and Microprocessor based controls, which increases the cooling efficiency and ensures trouble-free functioning of the unit.



## OUTDOOR UNIT

The Outdoor Condensing Unit houses the Scroll Compressor. It gives a wide range of comfort features, especially suited for Indian conditions like wide operating voltage, silent operation, economical running and unmatched reliability.



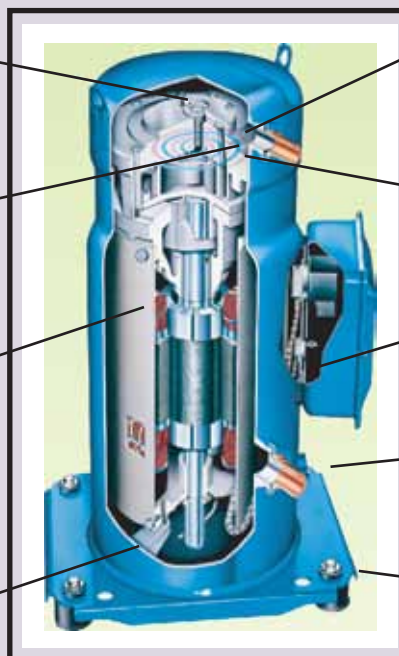
## COMPRESSOR

**Discharge check valve**

**Controlled orbit**  
Scroll slides on an oil film without contact to ensure precise machining

**Shielded motor**  
100% gas cooled

**Large liquid handling capabilities**



**Reverse rotation protection**

Helps avoid reverse rotation on shut down and lower noise on shut down

**Tip seal**

Low friction on base plate and long life by compensating for the differential in the expansion and contractions on base plate surface.

**Motor protection**

**Oil sight glass**

To test oil level at start up

**Full ridged base**

## **PENDENT CONTROLLER** (for 5.5 TR & 8.5 TR)

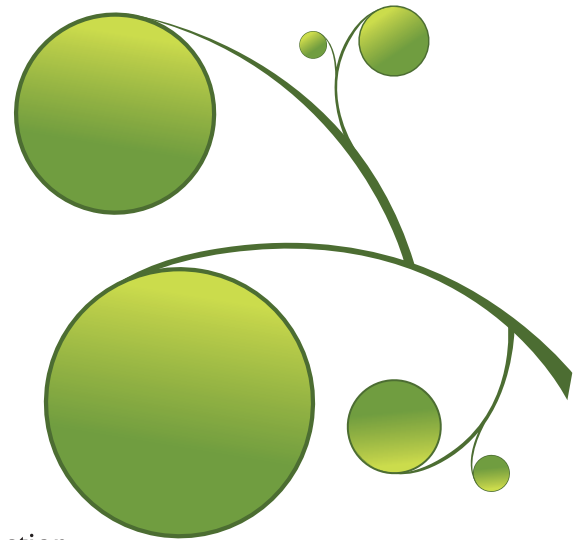
**Display:** Graphics LCD with back light, menu driven, user-friendly screen for different function settings.

**Keys :** 8 keys for different functions and settings, 2 Multi function keys, Up and Down keys, Right and Left Shift keys, On/Off key, Reset key.



### **FEATURES**

- On/Off
- Built in RealTime Clock
- Auto Re-start
- Mode Selection (Cool/Fan)
- Room Temperature Setting (16°C to 30°C)
- Room Temperature Display
- Indoor Fan Speed Selection (Low/Medium/High)
- Compressor On/Off delay for Compressor Protection
- Fault Indication LP, HP, Sensor Fail
- Password Protected Menu and Parameter Setting
- System Set Up
- 6 Prog. timer with 24 Hr Time Mode for Different Events Setting in a Day
- Probe Calibration (+- 10°C)
- Weekly Off. (2 Days)
- Holiday Exception (20 Holidays)
- Fault Logger for Viewing 100 Faults
- Total Run Time Viewing
- Filter Clean Time Setting



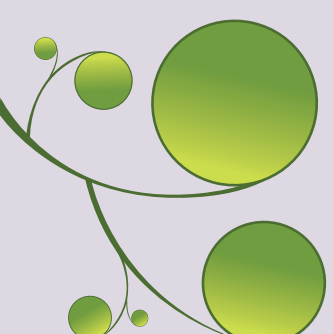


## Technical Specifications\*

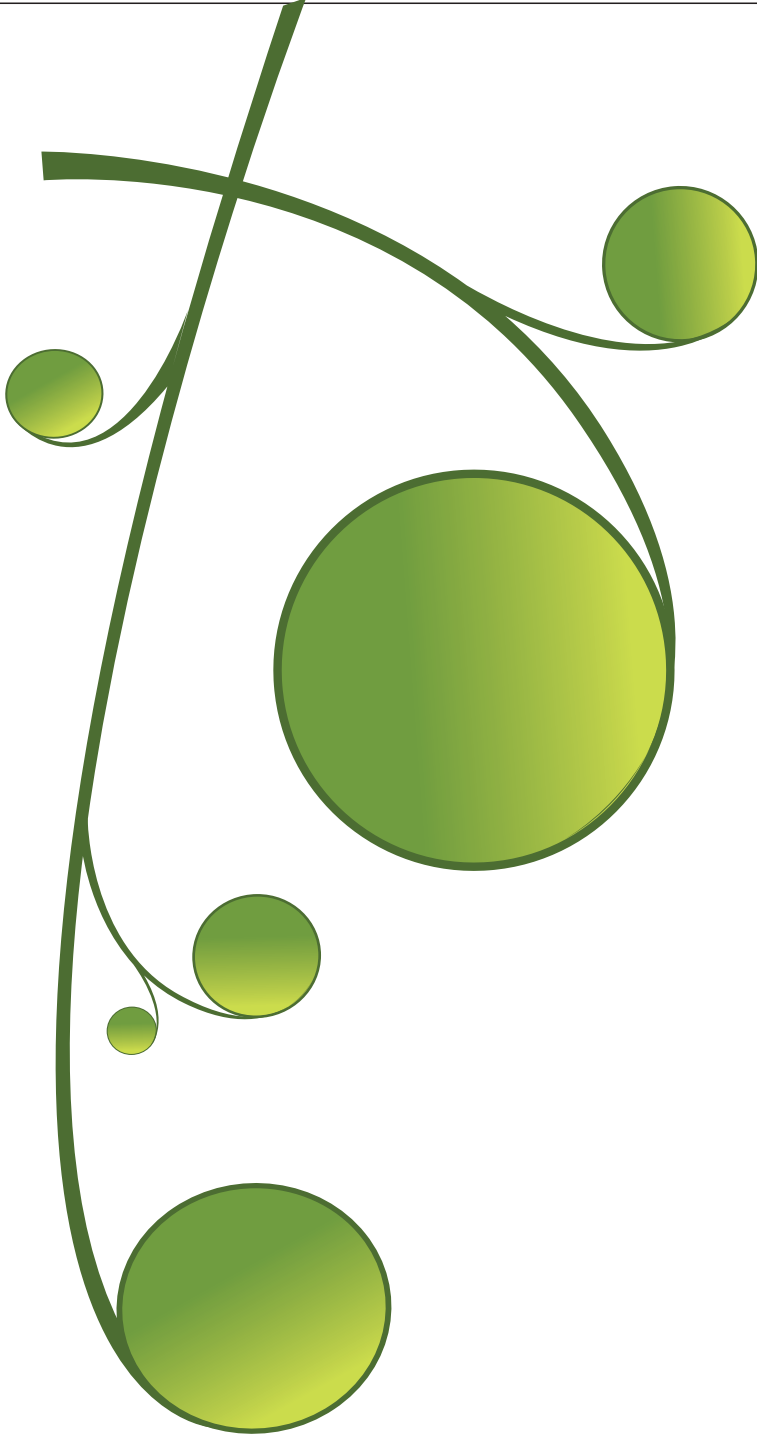
Model	INDOOR UNITS						OUTDOOR UNITS					
	40LCO6SDR	40LCO10C	40LCO12DR	40LCO12HC	40LCO18LN	38LH06SDR	38LH10DS	2 x 38LH06SDRS	2 x 38LH06SS	2 x 38LH10SSS		
Nominal Cooling Capacity**	5.5 TR 66000	8.5 TR 102000	11.0 TR 132000	13.0 TR 156000	17.0 TR 204000	5.5 TR 66000	8.5 TR 102000	11.0 TR 132000	14.0 TR 168000	17.0 TR 204000		
No. of Units	16500	25500	33000	33000	51000	16500	25500	33000	33000	51000		
Nominal Air Quantity (V/Hz/ph)	2200	3400	4400	4400	6800	4200	6800	4200	4200	6800		
Power Supply	3/40	5/70	7/80	9/90	11/90	7/40	10/200	7/40	7/40	10/200		
Fan	Direct Driven DIDW Forward Curved Centrifugal Blower						Ball driven DIDW forward Curved Centrifugal Blower					
Discharge	2	2	3	2	2	1	1	1	1	1		
Type	Horizontal	Horizontal/Vertical	Horizontal	Horizontal/Vertical	Horizontal/Vertical	Horizontal	Horizontal	Horizontal	Horizontal	Horizontal		
Fan Motor	PSC Single phase						Totally Enclosed Fan Cooled 3-Phase					
Qty.	1	2	3	1	1	1	1	1	2	1		
Power HP	3/4	1/2	1/2	3	3	1/2	1/2	1/2	1/5	1/2		
RPM	1350	930	930	1425	1425	900	900	920	920	900		
Fan Speed	Microprocessor - LCD Display						Microprocessor - LED Display					
Control Type	750x750x245	700x670 x 1646 x 460/490	925 x 1900 x 460	970 x 1946 x 884	970 x 1946 x 884	410x1040x875	714 x 982 x 1082	410 x 1040 x 875	600 x 1250 x 845	714 x 982 x 1082		
Overall Dimension (mm)	Type	-	-	-	-	-	-	Scroll	-	-		
Compressor	Make	-	-	-	-	Copeland/Sanyo	Manurop	Copeland/Sanyo	Copeland/Sanyo	Manurop		
Qty.	-	-	-	-	-	1	1	1	1	1		
Model	-	-	-	-	-	ZR7ZKCTFD/C-SB45H8A	SM110-SAV	ZR7ZKCTFD/C-SB45H8A	ZR7ZKCTFD/C-SB45H8A	SM110-SAV		
Net Weight	60	91	190	175	182	112	225	112	150	225		
Refrigerant	R 22											
Expansion Device	Thermostatic Expansion Device											

\*\* Above design and specifications are subject to change without prior notice for product improvement

\* Cooling Capacities under IS Test Conditions



**TOTALINE**  
A Division of Carrier  
Genuine MACKIN Space Fans and Accessories



turn to the experts 



For more details please contact the following Carrier sales offices:-

**CARRIER REGISTERED OFFICE:** Carrier Airconditioning & Refrigeration Ltd., Carrier Complex, Vill. Narsingpur, Kherki Daula Post, Gurgaon-122004, Haryana; Phone No.: 0124-4825500. **CARRIER SALES OFFICES:** **Gurgaon:** 0124-4707333, **Ghaziabad:** 0120-4183260, **Chandigarh:** 0172-5007548-50, **Jaipur:** 0141-5113444, 5113999, **Mumbai:** 022-26528989, 26541755, **Pune:** 020-25468301, 25437741, **Goa:** 0832-2447028, 2447027, **Ahmedabad:** 079-40267777, **Kolkata:** 033-40201300, **Chennai:** 044-42222888, **Bangalore:** 080-41114747, **Patna:** 0612-2323517, **Hyderabad:** 040-40118106, 40118147-48, **Cochin:** 0484-4029001, 4029000, **Lucknow:** 0522-2202346, 2230598, **Indore:** 0731-4294700, **Pondicherry:** 0413-2226676, **Coimbatore:** 0422-4385403, **Guwahati:** 0361-2595003, **Bhubaneshwar:** 0674-2587178, 2585893, **Nagpur:** 0712-6453790, **Ranchi:** 0651-6452488, 09835373982, **Raipur:** 0771-4013245.

[www.carrierindia.com](http://www.carrierindia.com)

